

DESIGN
GUIDE

X-1[®] Steel Framing

 **STRATCO**





STRATCO
**X-1 FRAMING™
SYSTEM**

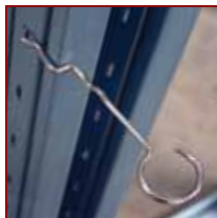
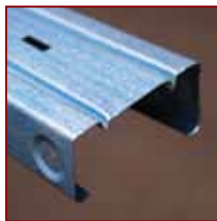
X-1 Framing System

The X-1 Framing System is a complete steel framing solution that has been designed and engineered by Stratco to strict standards of strength and quality.

With straight and true lines the Stratco X-1 Framing System can add an extensive range of quality features to your next project, such as raked or dropped ceilings, split level living areas and complex roof profiles.

X-1 Steel frames ...

- Are termite and borer resistant
- Remain straight and true
- Are easy to install
- Are strong and lightweight
- Do not absorb water
- Are not susceptible to dry rot
- Will not contribute to the fire load
- Are safe to handle
- Allow extended design freedom
- Are 100% recyclable
- Improve work site security



X-1 Wall Frames

Straight and true

Double ribbed 75mm zinc/alum high tensile steel stud, plate and noggin provides superior strength and rigidity.

Walls and ceilings are straight and true with no twists and curves making linings, floor coverings and carpentry simpler and quicker to install.

Recessed connections

Recessed locating indents and fixing holes create a flush and uniform wall finish, ideal for the installation of both internal and external wall linings.

The unique textured stud profile provides a strong keying surface for lining adhesives.

Special features

X-1 wall frames make home building easier...

- Rolled edge service holes for electrical and plumbing remove the need to use grommets.
- The product is asymmetric which allows studs to be 'boxed' (Fit inside one another).
- Stratco's lock-in brick tie system eliminates the use of fasteners.
- Light weight frames make handling and installation easier.





X-1 Roof Trusses



Truss chord and web

By using high tensile zinc/alum steel truss chord and web members the X-1 Framing System achieves up to a 15m clear spanning capacity.

X-1 roof trusses are suitable for tiled or steel roofs with pitches from 10° to over 45° and up to 900mm eaves overhang.



Truss tie down system

The X-1 truss tag system provides a simple and convenient way of positioning and securing trusses to external walls.

This system reduces installation time and the reliance on on-site measurements.



Profiles

X-1 roof trusses are designed to allow for a broad range of roof and ceiling profiles such as:

- Dutch gables
- Hips
- Skillion roofs
- Exposed eaves
- Porticos
- Raked ceilings
- Coffered ceilings
- Dropped bulkheads

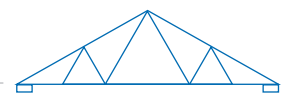
X-1 Flooring

Utilising open web bearers and joists the X-1 Framing System offers a versatile, tough and reliable solution for multistorey homes.

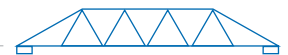
X-1 flooring is suited to a wide range of floor coverings including particle board and aerated concrete products.

Roof Truss Designs

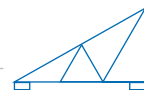
Standard Truss



Truncated Truss



Half Truss



Raked Ceilings



Truncated Saddle

